

Sai

Lakshmi
apartment



KST Promoter

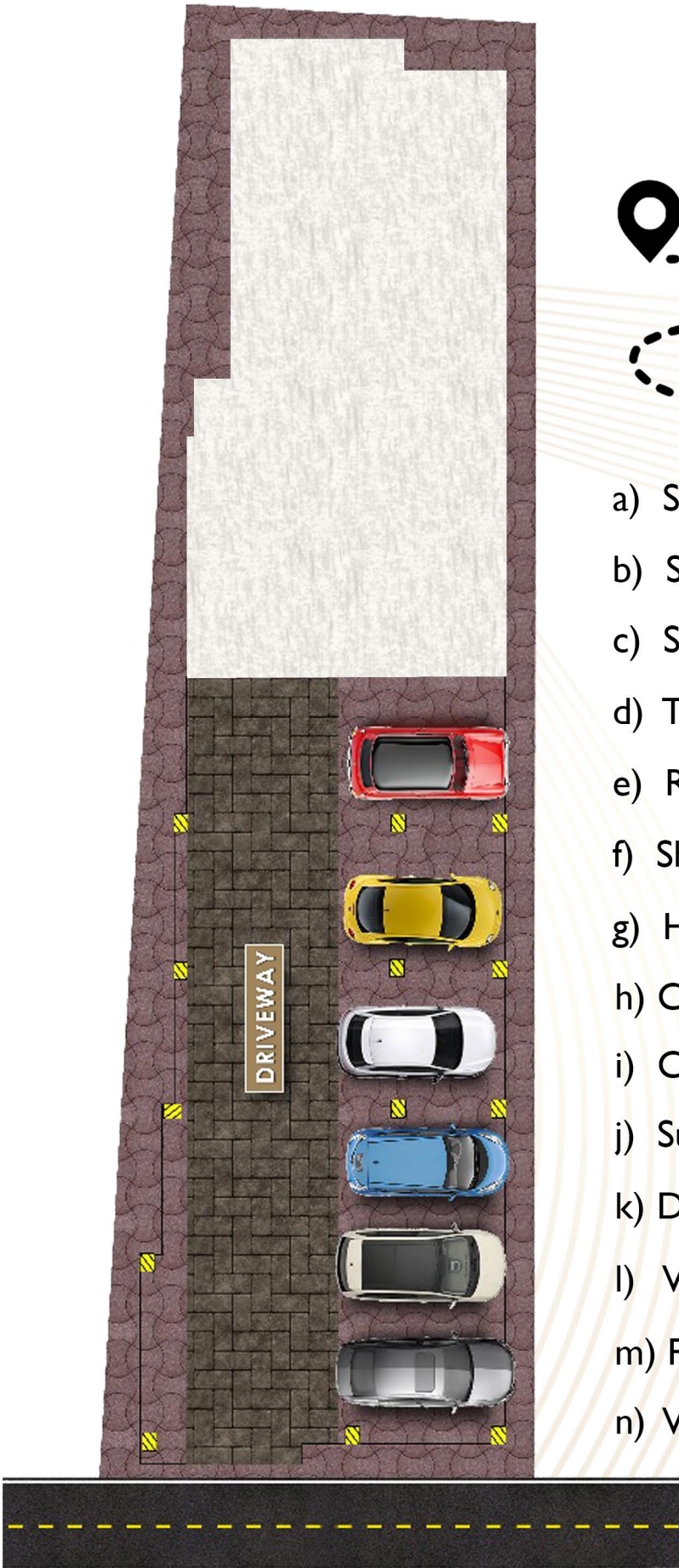
Builders & Contractors



Just **800** Meters
from **GST CROMPET**

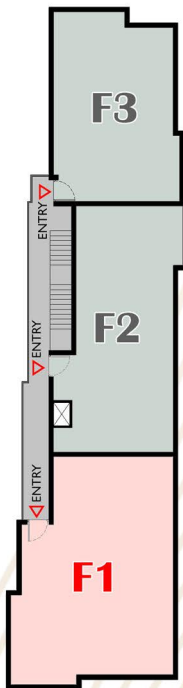
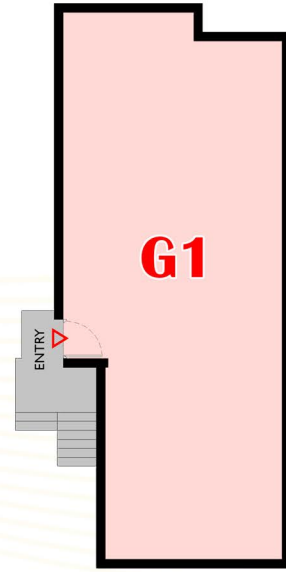


- a) Saravana Stores (Chrompet)
- b) Sree Balaji Medical College & Hospital
- c) Srimathi Sundaravalli CBSE School
- d) Tagore College Of Arts And Science
- e) Ramana Children's Hospital
- f) Shree Balaji Mahal
- g) HDFC Bank
- h) Chrompet Railway Station
- i) Chrompet Bus stop
- j) Sub Registrar Office
- k) Dr Batra's - Homeopathy Clinic
- l) Vasan Eye Care
- m) Petrol Bunk
- n) Vettri Cinemas



(G1) - 1009 Sq.ft

GROUND FLOOR
(NORTH FACING)



FIRST FLOOR
(EAST FACING)

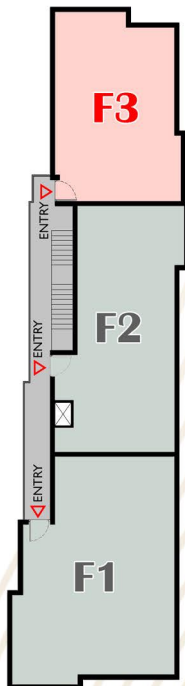
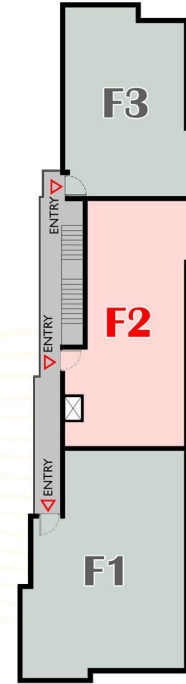


(F1) - 1108 Sq.ft

(F2) - 851 Sq.ft



FIRST FLOOR
(NORTH FACING)



FIRST FLOOR
(NORTH FACING)



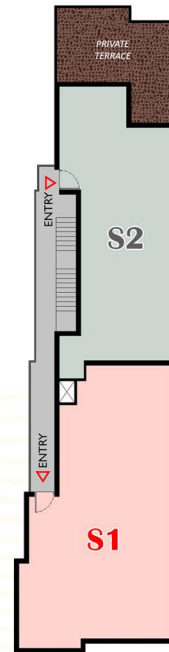
(F3) - 748 Sq.ft

(S1) - 1119 Sq.ft



SECOND FLOOR

(EAST FACING)



SECOND FLOOR
(NORTH FACING)



(S2) - 1000 Sq.ft



Isolated / combined footing,
R.C.C Framed structure designed by qualified professional structural Engineer.



All Interior Walls will be applied with wall putty and finished with premium paint.
Ceiling will be finished in Ultra white.



Granite top, Stainless steel sink, wall tile upto 2' above granite slab.



Entire Flat 2'x2' vitrified tiles Johnson /Kajaria* /somany / Equivalent Flooring
in all bathroom will be 1'x1' Anti skid tiles.



All windows are country wood (or) UPVC openable window with MS safety grills.



MAIN ROAD: Good Quality of Teak Wood panel finished with mela mine polish
with Godrej locks.

OTHER DOORS: Membrane Doors with good quality teak frames.

TOILET DOORS: Water proofing flush door (or) Foam Door.



External PVC piping (Astarl / Prince / Equivalent) and internal CPVC piping
(Astral / Prince / Equivalent). All Fitting will be Parryware* / equivalent.
Ceramic dado tiles upto 7' height.



Granite Flooring with SS Handrails.



Concealed 3 - phase Electricity supply with Oribt / Anchor Equivalent wiring
MCB'S adequate light, fan and sufficient power points, ROMA* / GM Switches sufficient
light in common areas. Free inverter wiring.

PAYMENT TERMS

1) Booking Advance	5%	6) On Completion of corresponding slab	5%
2) Within 10 days from booking	10%	7) On Completion of corresponding flat brick work	5%
3) At the time of Agreement (Within 20 days from booking)	10%	8) On Completion of plastering	5%
4) On Completion of Basement / UDS registration (Within 45 days from booking, which is earlier)	45%	9) On Completion of flooring	2.5%
5) On Completion of stilt slab	10%	10) One Month before handling over the flat	2.5%



OUR BANKERS

NOT TO SCALE



KST Promoter
Builders & Contractors

Office

Block-D/F3, No: 22,
Vaigundam Apartments, Kamarajar Salai,
Nesapakkam, Chennai - 78

Contact:

955 16 88282

palanikarthikeyan18@gmail.com